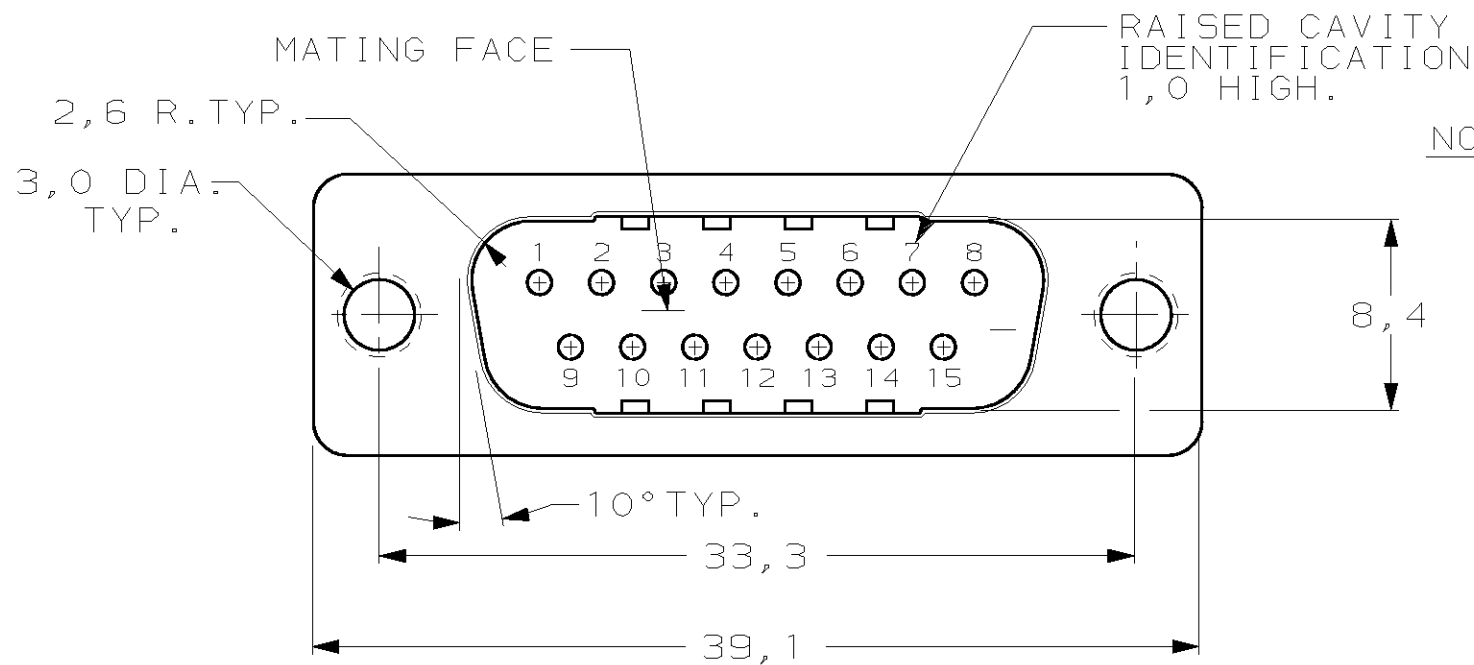
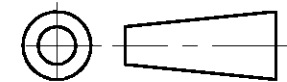


DO NOT SCALE

DIMENSIONS IN mm

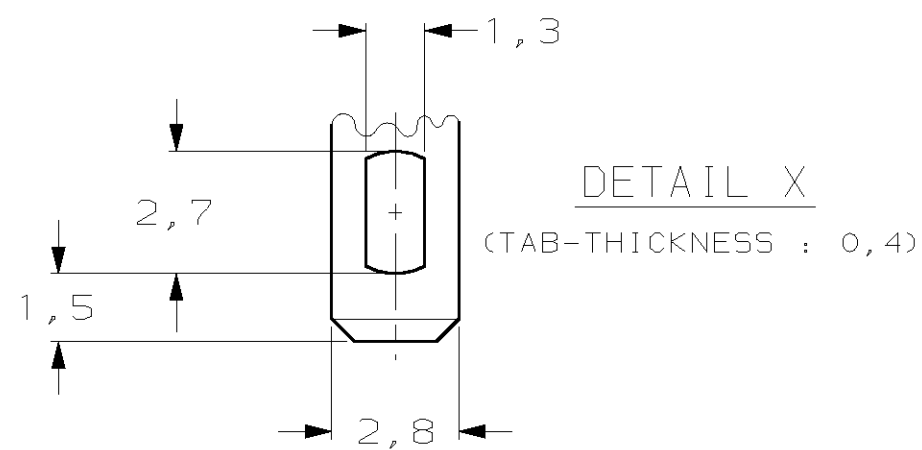
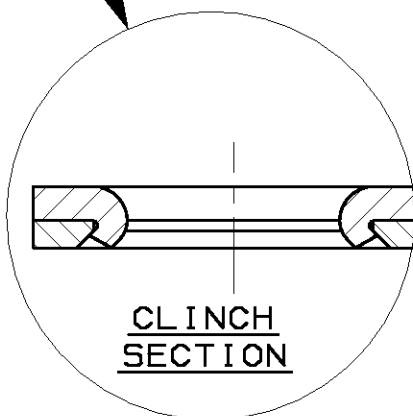
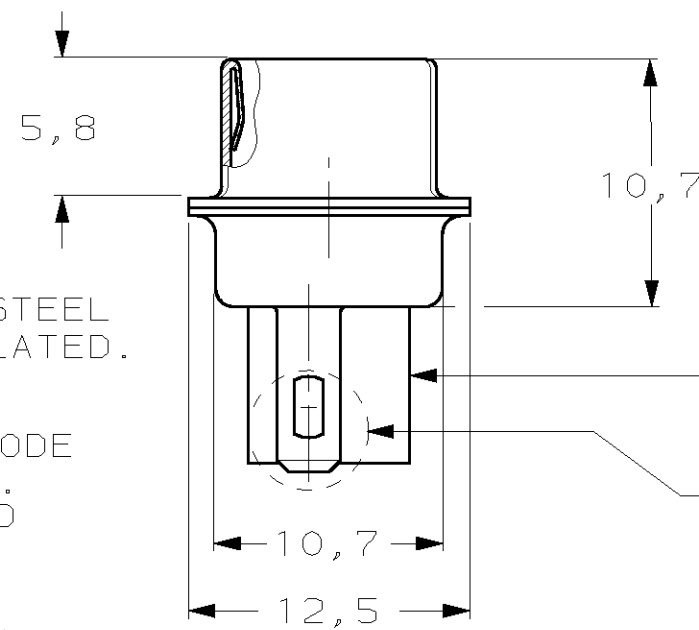
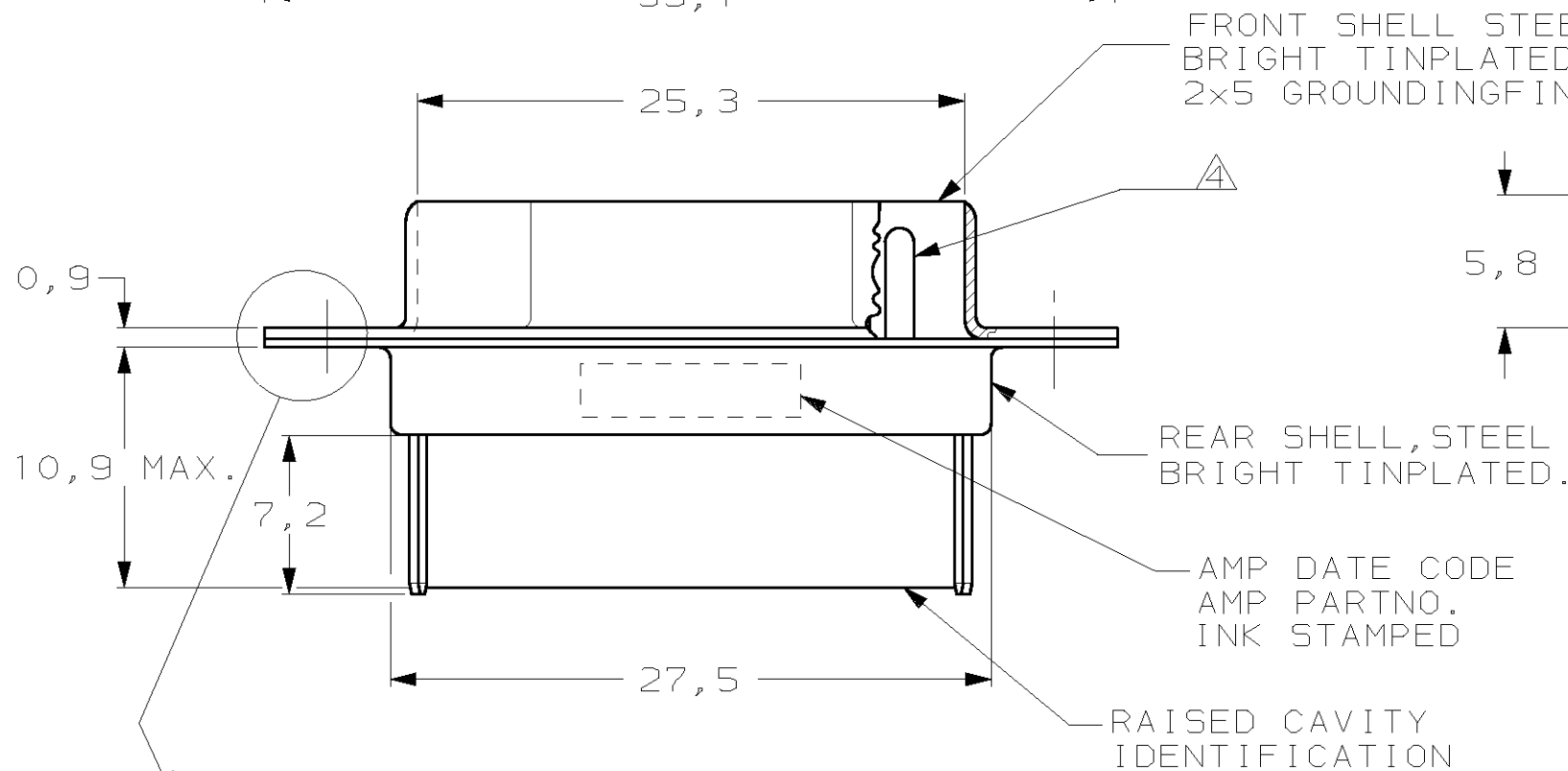
METRIC

THIRD ANGLE
PROJECTION



- NOTES: 1 THIS PLUG ACCEPTS SIZE 20 PIN CONTACTS
 2 MAXIMUM WIRE INSULATION RECOMMENDED FOR USE WITH THIS PLUG IS 1,73 DIA. MAX..
 3 RETENTION TINES ARE AN INTEGRAL PART OF INSERT.
 4 CONTACTS SHOWN FOR ILLUSTRATION ONLY, NO PART OF CONNECTOR PACKAGE, MUST BE ORDERED SEPARATELY.
 5 FOLLOWING INSERTION/REMOVAL TOOLS ARE RECOMMENDED FOR USE WITH THESE CONNECTORS:
- | | |
|---------------------------|---------------------------|
| 32-28AWG/28-24AWG CONT'S | 24-20AWG CONTACTS |
| 91067-3 INSERTION/REMOVAL | 91067-2 INSERTION/REMOVAL |
| 726363-1 INSERTION ONLY | 726363-1 INSERTION ONLY |
| | 726364-1 REMOVAL ONLY |

FRONT SHELL STEEL,
BRIGHT TINPLATED WITH
2x5 GROUNDING FINGERS AT 3,8 PITCH.



SEE DRAWING			SEE DRAWING			215712-1			
FINISH			MATERIAL			PARTNUMBER			
CUSTOMER DRAWING						FOR REFERENCE ONLY WILL NOT BE UPDATED			
© COPYRIGHT 19- BY AMP HOLLAND B.V.						ALL INTERNATIONAL RIGHTS RESERVED. AMP PRODUCTS MAY BE COVERED BY U.S. AND FOREIGN AND/OR PATENTS PENDING.			
THIS DRAWING IS UNPUBLISHED						RELEASED FOR PUBLICATION _____, 19____			
tyco Electronics						TYCO ELECTRONICS NEDERLAND B.V. 's-HERTOGEBOSCH, THE NETHERLANDS.			
NAME						HDP-20 PLUG CONNECTOR, SIZE 2, (15 POSITION) WITH SOLDER TAB.			
LTR. REVISION RECORD			DR. CHK. DATE			C EH01-1520-03 JvdH PDJ 22 DEC 03			
DR.: L.V.D.HEIJDEN.		CHK.: C.V.TILBURG.		APP.: L.V.SOEST.		DWG.No.		REV.LTR.	SHEET
DATE: 30-06-87		DATE: 07-07-87		DATE: 28-07-87		C-215712		C	1 OF 1